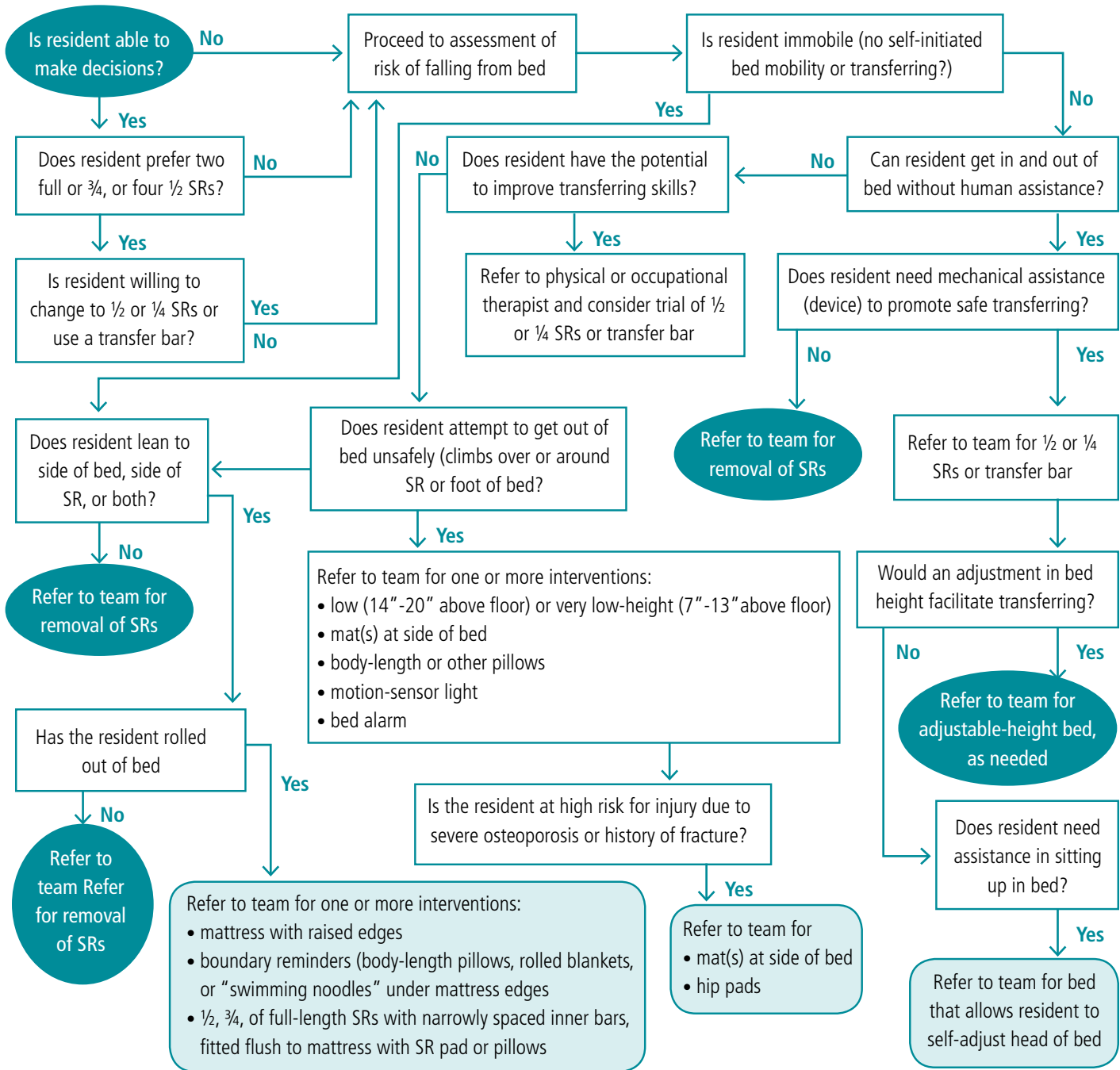


Appendix Q: Example: Siderail and Alternative Equipment Intervention Decision Tree



*SR=side rail. "Team" refers to a decision-making person/group as specified by the institution: a multi-disciplinary restraint-reduction team, geriatric-consultation team, rehabilitation department, nurse manager or supervisor, or a gerontologic APN.

Adapted from: Talerico, K.A. & Capezuti, E. (2001). Myths and facts about side rails. *Am J Nurs*, 101:43-48. Abstract available at PubMed.

Source: Talerico, K. & Capezuti, E. Myths and facts about side rails: Despite ongoing debates about safety and efficacy, side rails are still a standard component of care in many hospital. So how do you determine their safe use? *AJN: American Journal of Nursing*, Volume 101, Issue 7, pp. 43-48.

Reprinted with permission from Wolters Kluwer Health